



HYDRAULICS, INC.

“Fluid Power for Progress”

**Dump Body Equipment,
Accessories, and Body Parts**



Main Office: 4412 South 87th Street - Omaha, NE 68127

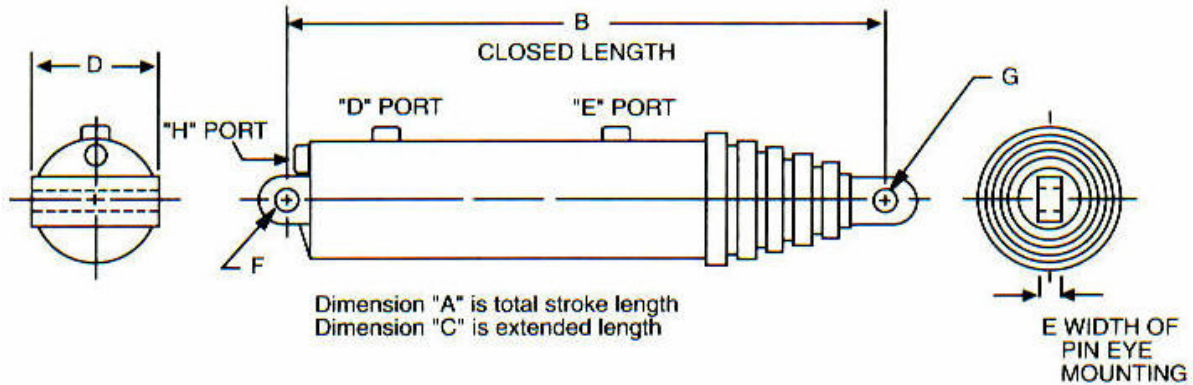
Phone: 402-339-3873 **Fax:** 402-339-0830 **Watts:** 800-642-8829

Branch Office: 2507 West 5th Street - Sioux Falls, SD 57104

Phone: 605-330-0535 **Fax:** 605-335-1733 **Watts:** 866-280-3599

EMAIL: sales@a-lhydraulics.com **WEB:** <http://www.a-lhydraulics.com>

Hycos Telescopic Cylinders



Part Number	A	B	C	D	E	F	G	A & L Part #
70000-815-191D	190.25	56.2	246.45	9.5	2	2.12	2.06	
70000-815-210D	210	60	269.25	9.5	2	2.12	2.06	HC10305
70000-815-235D	235	65	299.25	9.5	2	2.12	2.06	HC10410
70000-815-250D	250	68	317.25	9.5	2	2.12	2.06	
70016-74-120D	120	44.75	164.75	9.5	2	2.12	2.06	
70016-74-140D	140	49.75	189.75	9.5	2	2.12	2.06	
70016-74-140E	140	49.75	189.75	9.5	2	2.12	2.06	HC10710
70016-74-156DE	156	53.75	209.75	9.5	2	2.12	2.06	HC10810
70022-815-235D	234.88	65.16	300.03	10.25	2	2.12	2.06	
70050-63-132T	132	57.72	189.72	trunion	3.96	trunion	1.56	
70057-53-84	83.75	39.92	123.67	6.62	1.5	2.06	1.56	
70061-63-98D	98	48	146	9.5	2	2.12	2.06	HC11110
70195-73-130E	129.88	56.83	186.71	8.62	2	2.12	2.06	HC11305
70195-73-140E	139.88	60.17	200.05	8.62	2	2.12	2.06	
70195-74-135E	135	48.5	183.5	8.62	2	2.12	2.06	
70195-74-156DE	156	53.75	209.75	8.62	2	2.12	2.06	HC11370
70251-63-126	126	55.4	181.4	7.25	1.5	2.44	2.19	HC11505
70251-63-138	138	59.4	197.4	7.25	1.5	2.44	2.19	HC11605
70252-53-105	105	48.41	153.41	7.75	1.5	2.06	1.81	
70252-53-99	99	46.41	145.41	7.75	1.5	2.06	1.81	
70347-63-108E	108	49.4	157.4	7.25	2	2.12	2.06	HC11710
70347-63-120E	120	53.4	173.4	7.25	2	2.12	2.06	HC11925
70347-63-126E	126	55.4	181.4	7.25	2	2.12	2.06	HC12010
70347-64-136D	136	48.66	184.66	7.25	1.5	2.12	2.06	
70347-64-136DE	136	48.66	184.66	7.25	1.5	2.12	2.06	
70387-74-135E	135	48.5	183.5	8.62	2	2.12	2.06	HC12110



C101

Dual Shaft, 25 or 31 GPM
Lever or Air Shift
1" Keyed Shaft

Commercial Dump Pumps



C102

Direct Mount, 25 or 31 GPM
Lever or Air Shift, Clockwise
or Anti-clockwise rotation

Part Number	Description
C101D-20	Dual shaft, 25gpm @ 1200 rpm, lever shift
C101D-25	Dual shaft, 31gpm @ 1200 rpm, lever shift
C102-20-1-AS	Single shaft, anti-clockwise, 25gpm @ 1200 rpm, air shift
C102D-20-1	Single shaft, anti-clockwise, 25gpm @ 1200 rpm, lever shift
C102D-20-AS	Single shaft, clockwise rotation, 25gpm @ 1200 rpm, air shift
C102D-20	Single shaft, clockwise rotation, 25gpm @ 1200 rpm, lever shift
C102D-25-1	Single shaft, anti-clockwise, 31gpm @ 1200 rpm, lever shift
C102D-25	Single shaft, clockwise rotation, 31gpm @ 1200 rpm, lever shift
*All C101 and C102 pumps have a pressure setting of 2000 PSI	

Del Air Shift Components



A & L Part#	Item #	Description
DL11000	DAV-1201	Control Valve
DL1180	DAV-1221	Feathering Valve
DL11810	DAV-1221x2	Double Lever Control
DL11820	DAV-1221x3	Triple Lever Control
DL1230	DAV-1229	PTO/Hoist Control
DL13100	SVS-3013	Air Shift/V20
DL13900	SVS-3027	Air Shift/V40
DL14400	SVS-3034	Air Shift/S-100 Selector Valve
DL14800	DCC-1221x3	Console
DL14810	DCC-1229	Console
DL12600	DPS-3016	Air Shift Cylinder (fits Tyrone T101, T102, Commercial C101, C102, Permco)



Reservoirs

Size	Length	Width	Height	A&L Part #
30 Gallon	48"	10"	13"	ZZ32400
40 Gallon	24"	21"	20"	ZZ32292

Comments: Tanks include sight level/temperature gauges, filler breather cap, and in-tank strainers. 40 Gallon tanks also include a 6" clean-out cover. 10, 20, and 50 Gallon tanks are also available upon request.

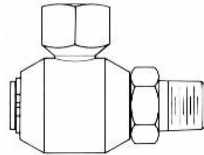


Quick Disconnects

We carry "Faster" Quick Disconnects with the ability to crossover to Pioneer/Parker and Aeroquip.



A & L Part #	Faster	Pioneer/Parker	Aeroquip
FA11790	HNV 1M	H8-63	FD45-1002-16-16
FA11785	HNV 1F	H8-62	FD45-1003-16-16
FA10080	ANV 1F		5601-16-16S
FA10090	ANV 1M		5602-16-16S
FA11200	FB-16/1-NPT-F5	6135-16	5100-S5-16B
FA11300	FB-16/1-NPT-M5	6105-16	5100-S2-16B



Miscellaneous Accessories

Item #	Description	A&L Part #
S-100-AS	Air Shift selector valve for trailer	GS18350
9S16PF16P16	1" street-L swivel adapter	HY11700

Service Department

A variety of services for these and many other brand names:

Telescopic Cylinders/ Dump Bodies	Dump Pumps
Commercial	Commercial
Custom Hoist	Heil
Heil	Muncie
Hyco/Fruehauf	Permco
Omaha Standard	Tyrone

***Seal kits, packing kits, and replacement parts for cylinders, pumps and other dump accessories.**

*** Complete machine shop and test facilities for rebuild/repairs, replacements, or any other modifications.**