

AL HYDRAULICS, INC.

“Fluid Power for Progress”

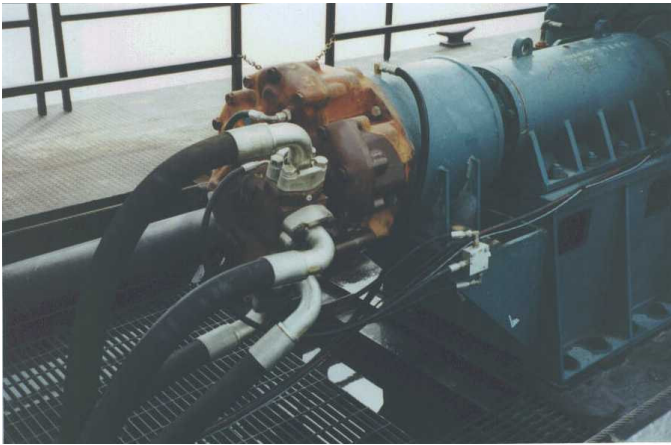
4412 South 87th Street: Omaha, NE 68127 - (402) 339-3873, (800) 642-8829, Fax (402) 339-0830
Email: sales@a-lhydraulics.com Web: <http://www.a-lhydraulics.com>

Sand & Gravel Slurry Pumping

Subject: Underwater slurry pumping using a hydraulic motor for the pump drive.

- Using a SAI radial piston motor direct mounted to the product pump. We have a unit in service for 2 years driving a Thomas 16 x 14 pump at 500 RPM.
- The SAI hydraulic motor is driven by 4 pressure compensated piston pumps rated to 300 GPM and 2500 PSI.
- The present motor speed control is solenoid on/off with a manual speed adjustment.
- The pumps have the capability of electronic speed control for interface with a PLC or computer control.

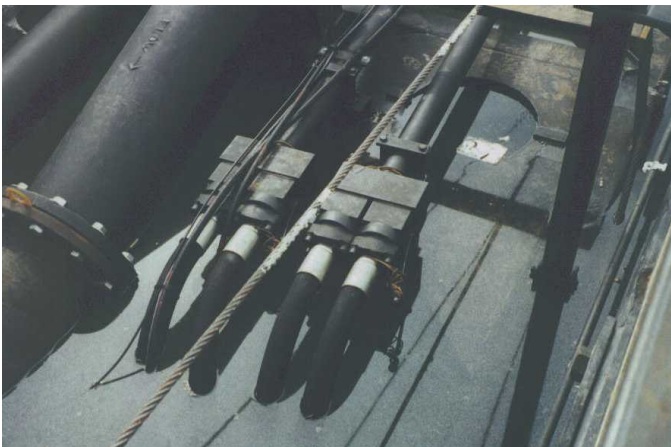
The following are pictures of the system and components:



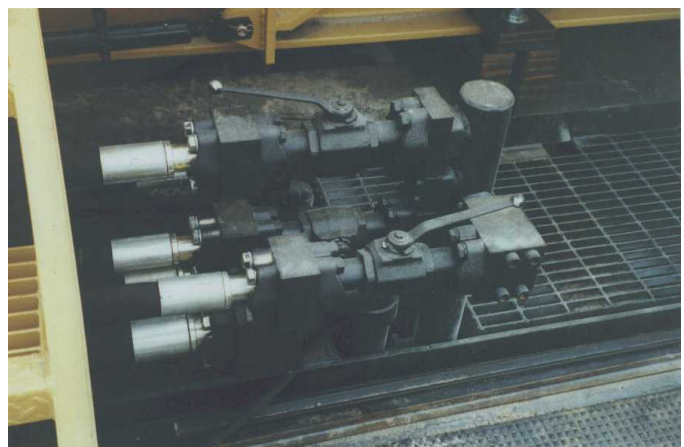
SAI Motor



Hydraulic Drive Pumps



Plumbing to Underwater Motor



Pump Manifold to 3" Header Manifold