

A^{AND}L HYDRAULICS, INC.

“Fluid Power for Progress”

4412 South 87th Street: Omaha, NE 68127

(402) 339-3873 (800) 642-8829

Email: sales@a-lhydraulics.com

Web: <http://www.a-lhydraulics.com>



SNOWPLOW SYSTEMS



Control Point Module & Display



“LT” Control

GROUND SPEED CONTROLS



Control Point:

Provides three channels of control in one console, giving you the capability to control the application rates of granular de-icing materials, liquid materials and spinner speed simultaneously.

- Use either the Control Point or LT system to set up a new truck with ground speed control.
- Perfect for converting Gresen QD control to ground speed or convert a problem system.
- Both systems are capable of working with nearly any valve (Gresen, Rexroth, Danfoss, etc.)
- Simple, affordable, and dependable.

LT Control:

- Compatible with most pulse width modulated valves.
- Variable conveyor control that is related to ground speed.
- 20 position rotary dials, one for conveyor control and one for spinner adjustment.
- Momentary blast switch for spot spreading.
- Spreader control switch for Off, Auto and Manual operation.
- 2 digit LED display to assist with set up.



Hydraulic Spreader Control Valve:

- Compatible with fixed displacement or load sense pump.
- Eliminates conveyor creep.
- Equipped with manual override.
- Conveyor circuit sizes from 0-32 gpm.
- Spinner circuit sizes from 0-8 gpm.



Joystick Control:

- Feathering capability, works with proportional or standard valves.
- Dual (up, down, left, right) or single axis of control.
- Automatic float control.

Rexroth
Bosch Group

Brueninghaus Hydromatik

Rexroth Piston Pump



Rexroth MP-18 Stack Valve



A10VO71DFR/31L PKC

Parker

Parker Spinner Motor: TB0050FP100AAAA

Equivalent to:

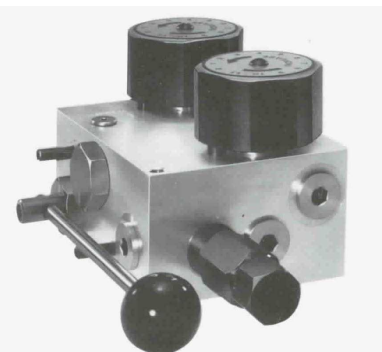
Charlynn 101-1001, 130-1001
Dan-foss 151-2121
Nichols 050-1-FP-0
Prince ADM50-4RP
Ross MG-03-13-10-AAAB
Ross MAG04026
White HS-03-01-01



Parker Auger Motor: TB0295FP100AAAA

Equivalent to:

Charlynn 101-1007
Dan-foss 151-2128
Prince ADM300-4RP
Ross MG-18-13-10-AAAB
Ross MAG24026



Parker Flow Control Valve:

Up to 2500psi, 40gpm
Pressure Compensated
Spinner range: 0-5, 0-7, 0-10 gpm
Auger range: 0-10, 0-16, 0-30 gpm
SAE or NPT porting
Load sensing version available



GPS System

Dickey John's "Fleet Finder" Automatic Vehicle Locator is the leading edge in real-time fleet tracking. It delivers up-to-the-minute storable fleet data 24 hours a day viewable on any computer via the internet. An advanced wireless network transmits data to a customizable web site that tailors the information to your needs. View data including: start date and time, ground speed, direction, location, liquid/granular application rates, material used, plow position, road temperature, air temperature and more!

The compact design installs in just three connections, and the reports can be downloaded to your computer.

For more information, please contact A&L Hydraulics.

ACCESSORIES

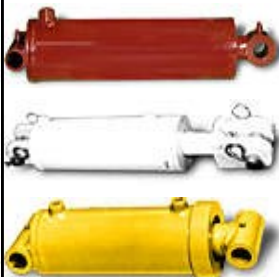


- Available for all transmissions. Eaton-Fuller, Allison, etc.
- Heavy duty PTO for a great price.
- Conversions from Chelsea and Muncie.
- "Hot-shift" available.



Telescopic Hoist Cylinders

- All sizes in stock.
- Equivalent to Commercial, Custom Hoist, Heil, etc.
- Seal kits, bushings, rebuilds available.



- Cylinders: welded and tie rod.
- Gear Pumps.
- Mobile Valves.
- Accessory Valves: relief, flow control, check, selector, sequence, priority.
- LSHT motors.



- In-tank, spin-on, pressure, suction and return filters.
- Able to cross over any brand.

